

Product overview

tooling resins blocks ancillaries silicones



ebalta
Solution takes shape

Resin / Hardener	Properties + Applications				Mixing ratio p.b.w.	Special mixtures		
	Color			Pot life approx. min.		Type	Properties	Mixing ratio
OH 4/SR	white blue	versatile, very good spreadable, good grinding, impact resistant surface	negatives, master models, jigs, foundry pattern	15-20	100 : 12.5	SL	longer pot life	100 : 14
OH 6 SL	blue red	very abrasion resistant, very hard, fine structure	foundry pattern, PU-foaming tools, polyester hand lay-up mould, coping models	15-20	100 : 9	CH-1	chemical resistant	100 : 11
OH 11/ PUR 3	red brown	abrasion resistant, impact resistant, excellent dissolving properties of mould and core sand, on polyurethane base	foundry pattern, core boxes	30-40	100 : 40	OH 11	very hard, tough	100 : 30
						OH 11 steel	sheet metal forming	100 : 20
OH 12/AG	beige	very shock resistant, abrasion resistant, resistant	core boxes, pattern plates, foundry pattern, boards	20-25	100 : 17	OH 12-G	good surface slip, aluminium sheet forming	100 : 15
OH 16	light green	very abrasion resistant, hard flexible, very shock resistant, excellent dissolving properties of mould and core sand	core boxes, hammer form tools, pattern plates	10-15	100 : 70	-	-	-
OH 17	white	very abrasion resistant, hard elastomeric, very shock resistant, excellent dissolving properties of mould and core sand	pattern plates, foundry pattern, core boxes, hammer form tools, jigs	10-15	100 : 45	-	-	-
OH 20/ CH-2 gel	red brown	fine structure, jointless surface, well workable, well spreadable	master models, design models	30-35	100 : 15	CH-2	well spreadable, dense surface	100 : 15
OH 33/ CH-1	black	styrene resistant, resistant against solvent, good grinding, dense surface, heat resistant	RTM tools, polyester tools, hand lay-up models, PU-foaming tools	20-30	100 : 19	-	-	-
OH 35/ CH-1	black	chemical resistant, polishable, grinding possible, dense surface, heat resistant	PU-foaming tools, RIM foam tools, polyester press forms, prepreg tools, adhesive probes, vacuum forming tools	20-30	100 : 16	-	-	-
OH 38/ SR	alu-grey	good grinding, aluminium-like, polishable, dense surface, good heat resistance	vacuum forming tools, PU-foaming tools, prepreg tools, adhesive probes	20-30	100 : 12	CH-1	chemical resistant	10 : 15
OH 47	white	very abrasion resistant, hard elastomeric, very shock resistant, non-toxic according to regulations for hazardous material	pattern plates, foundry patterns, core boxes, hammer form tools, jigs	14-20	100 : 41	-	-	-
OH 50	black	styrene resistant, chemical resistant, very dense surface, polishable, good heat resistance	RTM tools, polyester tools, hand lay-up models	12-18	100 : 20	-	-	-
OH 82/ TM	black	very low thermal expansion, very high heat resistance dimensionally accurate	prepreg tool	220-260	100 : 31	-	-	-

Resin / Hardener	Properties + Applications				Mixing ratio p.b.w.	Special mixtures		
	Color			Pot life approx. min.		Type	Properties	Mixing ratio
LH 22/GL	white	dimensionally accurate, long pot life, low exothermic character	master models, checking gauges, laminate moulds, fixtures, foundry pattern	40-45	100 : 25	GR	faster curing	100 : 23
LH 25	white	flammability classification S 4, smoke emission class SR-2, tear drops class ST-2, dimensionally accurate	laminate parts for rail vehicles, boatbuilding	50-60	100 : 15	LH 25/S	faster curing	100 : 15
						LH 25/L	slower curing	100 : 15
LH 28-1/TM	brown transparent	very high heat resistance, long processing time, low exothermic character, heat curing	vacuum forming tools, prepreg tool, heat solvent probes, blow moulds, polyester injection moulds	240-360	100 : 40	-	-	-
AH 100/TG	yellow transparent	unfilled, low cost, low viscosity	binding resin for silica sand auxiliary negatives, laminating resin for fabrics, binding resin for fillers	40-50	100 : 20	D	high fillgrade	100 : 19
						GL	versatile	100 : 29
AH 110/TL	yellow transparent	unfilled, high strength, high heat resistance	laminating resin for fabrics, binding resin for fillers	85-95	100 : 24	TGL	good curing	100 : 22
						TGS	fast curing	100 : 22
AH 120/TL	whitish transparent	unfilled, high heat resistance, low viscosity, high strength	laminating resin for fabrics, vehicle construction, aircraft construction	80-90	100 : 25	TGL	good curing	100 : 22
						GLD	low viscosity	100 : 30
AH 140/TC 60	bluish transparent	unfilled, good curing at room temperature, high heat resistance, low viscosity, high strength, excellent wet-out characteristics	hand laminating, vacuum infusion, carbon fibre sight laminates, Laminates for: boatbuilding, automotive industry, aeronautic	55-65	100 : 30	TC 30	shorter pot life	100 : 30
						TC 180	longer pot life	100 : 30
GH 705/TL	alu-grey	high heat resistance, aluminium-like	PU-foaming tools, RIM foaming tools, vacuum forming tools, heatable foundry pattern	65-75	100 : 10	SR	brushable, fast curing	100 : 9
GH 706/GLE	blue	abrasion resistant, fine structure, good compressive strength, very hard, wear resistant, well castable, castable until 20 mm	foundry pattern, core boxes, pattern plates, coping models	30-40	100 : 18	GL	castable very thick	100 : 10
GH 723/D	green	low viscosity, very well castable, well workable	bonding resin for fillers	55-65	100 : 7	-	-	-
GH 730/BR	black	impact resistant, versatile	foundry pattern, core boxes, pattern plates, jigs	35-45	100 : 10	D	thin liquid	100 : 5
						GL	longer pot life	100 : 5
						SR	brushable	100 : 5

Laminating and general purpose resins

Epoxy casting resins

Epoxy casting resins

Resin / Hardener	Properties + Applications				Mixing ratio p.b.w.	Special mixtures		
	Color			Pot life approx. min.		Type	Properties	Mixing ratio
VF 2000	alu-grey	heat resistant, very thick castable, well workable, aluminium-like	vacuum forming tools, PU-foaming tools, RIM foaming tools, casting mould for thermoplastic, heat-able foundry pattern	100-120	100 : 7	-	-	-
GH 760/ GL	grey	dimensionally accurate, abrasion resistant, high strength, castable until 40 mm, very good sliding properties	foundry pattern, core boxes, boards, checking casts, jigs, hammer form tools, stretch forming tools, stretch tools	45-55	100 : 10	SR	brushable	100 : 7
GH 781/ GH 781 S	grey	heat resistant, short curing time, high strength, low thermal expansion	PU-foaming tools, heatable foundry pattern	90-110	100 : 5	GH 781	longer processing time	100 : 5
PS 03	blue	glassfiber-filled	foundry pattern, core boxes, negatives, mould constructions	50-60	100 : 18	PS 03 L	longer processing time	100 : 18
PS 05/TLB	grey	low shrinkage, soft, heat resistant	vacuum forming tools, PU-foaming tools, polyester press forms, prepreg tools, adhesive probes	50-60	100 : 13	-	-	-
PS 06/TL	alu-grey	heat resistant, good conductivity, good compressive strength, glassfiber-filled, aluminium filled	vacuum forming tools, foam tools, polyester press tools	50-60	100 : 4	-	-	-
PS 07-1/ TM	alu-grey	heat resistant, glassfiber-filled, aluminium filled	vacuum forming tools, press tools, prepreg tools, polyester press tools, adhesive probes	70-80	100 : 6	-	-	-
PS 08/TL	alu-grey	aluminium filled, glassfiber-filled, air permeable	bulking material for vacuum forming tools	45-60	100 : 3	-	-	-
P 22	red brown	good manual modelling, dimensionally accurate, very well workable, long processing time	in the automotive field, aircraft construction, industrial design	40-50	100 : 100	-	-	-
P 24	red brown	jointless surface, good curing, very well workable, dense surface, fine structure, no sagging at vertical surfaces	for boat building, in the aircraft industry, in the wind energy industry, close to final shape models in the automotive industry	20-25	100 : 40	-	-	-

Pastes

Resin / Hardener	Properties + Applications				Mixing ratio p.b.w.	Special mixtures		
	Color			Pot life approx. min.		Type	Properties	Mixing ratio
P 26	red brown	jointless surface, 30-50 mm layer possible in one step, low exothermic, dimensionable stable, very well workable, dense surface, fine structure, no sagging at vertical surfaces	close to final shape models in the automotive industry, for boat building, in the aircraft industry, in the wind energy industry	45-60	100 : 100	-	-	-
KP 6/TGL	grey	aluminium filled, heat resistant	couplingpaste EP resin / backfilling	30-40	100 : 18	-	-	-
KP 7-1/TM	grey	high heat resistant, aluminium filled	couplingpaste for OH 33/HM, OH 35/HM, OH 38/HM, OH 82/TM	240-360	100 : 32	-	-	-
SG 140/ PUR 11	ivory	unfilled, impact resistant, high strength	foundry pattern, core boxes, pattern plates, negatives, prototypes, vacuum forming tools, coping models, mould probes for trimming of prototypes	2.5-3.5	100 : 100	SG 141	pot life 5-7 min.	100 : 100
						SG 131	pot life 9-15 min.	100 : 100
SG 150	grey	heat resistant, fast curing	vacuum forming tools, foam tools, polyester press tool	18-22	100 : 200 : 450 : 9	-	-	-
SG 152	grey	heat resistant, fast curing	vacuum forming tools, polyester press forms, tools for plastic pressing, tools for plastic stamping	18-22	100 : 200 : 3	-	-	-
SG 600/ PUR 4	red	fine structure, well workable, very well castable	foundry pattern, core boxes, checking casts, negatives, prototypes, mould probes for trimming of prototypes	4-6	100 : 15	-	-	-
SG 700/ PUR 5	blue	well castable, fine structure, dimensionally accurate, fast curing, versatile	foundry pattern, core boxes, jigs, negatives, checking casts, prototypes	5-6	100 : 15	SG 700 A	abrasion resistant, pot life 5-7 min.	100 : 15
SG 2000 A SG 2000 B	ivory	unfilled, very thin liquid, high filler content possible, good curing, very high strength, very heat resistant	foundry pattern, core boxes, negatives, pattern plates, checking casts, coping models, vacuum forming tools, mould probes for trimming of prototypes	2.5-3.5	100 : 100	SG 2000 S	pot life 1.5-2.5 min.	100 : 100
						SG 2000 L	pot life 7-8 min.	100 : 100
						SG 2015	pot life 14-18 min.	100 : 100
ebatemp/ PUR 5	alu-grey	very smooth surface, polishable, well castable, well workable, aluminium filled	vacuum forming tools, foundry pattern, negatives	4.5-5.5	100 : 15	-	-	-

Pastes

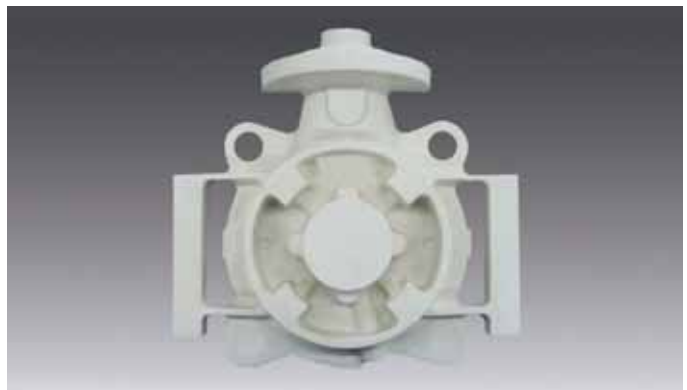
Fast casting resins

Resin / Hardener	Properties + Applications				Mixing ratio p.b.w.	Special mixtures		
	Color			Pot life approx. min.		Type	Properties	Mixing ratio
GM 708/ PUR 4	brown	unfilled, slow curing	sheet metal forming, foundry pattern, negatives, jigs	45-60	100 : 75	-	-	-
GM 714/ PUR 4	grey	very thick castable, wear resistant, dimensionally accurate, abrasion resistant, versatile	sheet metal forming, foundry pattern, pattern plates	40-45	100 : 15	-	-	-
GM 725-7/ PUR 13	beige	thick castable, dimensionally accurate, excellent flow properties, well workable, long potlife, high strength	sheet metal forming, negatives, foundry pattern, checking casts, pattern plates, jigs	40-50	100 : 15	PUR 4	high strength	100 : 15
GM 900	black	Shore A hardness 10, highly flexible, good tear propagation resistance	casting mould for gypsum, for plastic, for wax and for ceramic materials	50-60	100 : 10	-	-	-
GM 951	black	Shore A hardness 47, high tear strength, well castable	casting mould for gypsum, for plastic, for wax, for ceramic materials, for PU-foam, for cement and for gaskets, sealing profiles in core boxes, jigs	25-30	100 : 10	-	-	-
GM 958	red brown	Shore A hardness 60, very low water absorption, excellent flow properties, good tear propagation resistance	casting moulds for concrete industry, for cement, for ceramic materials, for wax, for gypsum and for plastic, prototypes with rubber-like properties	20-30	100 : 100	-	-	-
GM 959	amber	Shore A hardness 45, Shore hardness (flexibility) variable, excellent flow properties, good degassing, easily dyeable, good tear propagation resistance	casting moulds for concrete industry, for cement, for wax, for ceramic materials, for gypsum and for plastic, prototypes with rubber-like properties	22-28	100 : 150	GM 959-1 comp. B	Shore A hardness 80	100 : 50
GM 972	beige	Shore A hardness 85, well castable, high strength, cold flexible, easily dyeable	casting moulds for gypsum, for plastic, for wax, for PU-foam, for cement and for ceramic materials, jigs	6-8	100 : 45	PUR 11	Shore A hardness 75	100 : 60
GM 973	beige	Shore A hardness 90, high tear strength, well castable, flexible, dyeable	flexible parts, jigs	12-15	100 : 15	-	-	-
GM 974	reddish transparent brown	very abrasion resistant, hard flexible, castable until 20 mm	core boxes, jigs	20-25	100 : 65	-	-	-
GM 975	white	very abrasion resistant, hard elastomeric castable until 20 mm	core boxes, foundry pattern, pattern plates, jigs	12-15	100 : 36	-	-	-

Resin / Hardener	Properties + Applications				Mixing ratio p.b.w.	Special mixtures		
	Color			Pot life approx. min.		Type	Properties	Mixing ratio
GM 978/D	black	very shock resistant, well castable, castable until 8 mm	foundry pattern, core boxes, prototypes with thermoplastic like properties	35-45	100 : 17	GL	thicker castable	100 : 25
GM 979/ PUR 1	green	wear resistant, good compressive strength, impact resistant, heat resistant, excellent dissolving of mould and core sand properties	foundry pattern, core boxes, pattern plates, negatives	15-30	100 : 25	-	-	-
HFG/ PUR 11	grey	very thick castable, fast curing, impact resistant, dimensionally accurate, for large volume back fillings	backfillings for core boxes, backfillings for negatives	7-9	100 : 33	HFG-plus	castable very thick, good impact resistance, low price	100 : 22
Silicone SR 1	light grey	condensation curing, high strength, in-mould releasing, flexible, 28 Shore A	flexible parts, casting moulds for gypsum, for plastic, for wax, for ceramic materials, for flexible gaskets, cast-in of electrical parts	20-30	100 : 2	thin liquid	condensation curing, well castable, low viscosity, in-mould releasing, 28 Shore A	100 : 2
HQA 40	translucent	addition curing, demouldable after 5/6h, oil bleeding, 40 Shore A	flexible moulds for casting, for vacuum casting, for gypsum, wax, plastics, encasing of electrical oil bleeding components	90	100 : 10	-	-	-

Polyurethane casting resins

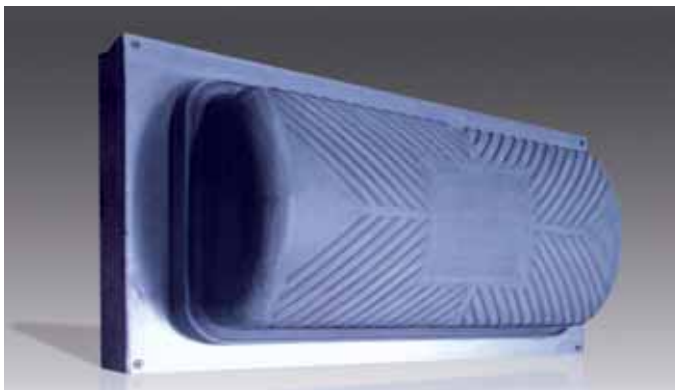
Casting silicones



	Color	Properties	Applications
ebablock® M 007	grey	dense surface, fine structure, very well workable	cubing models, master models, design models
ebablock® K	pink	very high abrasion resistant, very shock resistant, dense surface	core boxes
ebablock® M 04 ebaboard M 04	yellow	high abrasion resistant, very shock resistant, very good edge strength	core boxes, foundry pattern, pattern plates
ebablock® 140 ebaboard 140	blue	low thermal expansion, high abrasion resistance, fine structure	foundry pattern, core boxes, pattern plates
ebablock® G	beige	fine structure, dense surface, very well workable, no generation of dust during machining	foundry pattern, core boxes, pattern plates
ebablock® Alu	alu-grey	dense surface, low thermal expansion, well workable	data control models, jigs, foundry pattern, inspection models, design models, arts and crafts
ebablock® W ebaboard W	grey	high strength, wear resistant, low thermal expansion	tools, jigs, mould constructions sheet metal forming, hammer form
ebablock® W mineral	blue, beige	very low thermal expansion, high strength, well workable	galvano bath models, jigs, pattern plates
ebaboard 300	brown	very easy to machine, dimensionally stable	design models, GRP moulds
ebaboard L	orange	very well workable, good edge strength, good compressive strength	master models, design models, laminating tools
ebaboard 60	red brown	dense surface, fine structure, very well workable	master models, design models, foundry pattern
ebaboard S	red brown	dense surface, fine structure, very well workable	master models, foundry pattern, design models
ebaboard 1200	light beige	low thermal expansion, good edge strength, high quality surface	jigs, fixtures, moulding tools
ebaboard PW 920	green	good edge strength, high quality surface, very well workable	foundry pattern, core boxes, pattern plates
ebaboard T	grey	heat resistant, very good edge strength, fine structure, dense surface, no generation of dust during machining, very well workable	vacuum forming tools, moulding tools
ebaboard LX	beige	very low thermal expansion, good edge strength, impact resistant, high quality surface, dense surface, well workable (contains no abrasive fillers)	jigs, moulding tools
ebazell 50	light beige	very low weight, very well workable	styling models, negatives, base construction
ebazell 80	light beige	fine structure, very well workable	styling models, master models, design models
ebazell 160	light green	very fine structure, very well workable	master models, design models, arts and crafts
ebazell 260	light grey	very fine structure, very well workable, dimensionally stable	master models, design models, arts and crafts

Density [g/cm ³]	Linear thermal expansion coefficient [10 ⁻⁶ K ⁻¹]	Hardness [Shore D]	Temperature resistance Martens [°C]	Available sizes [mm]
0.80 ± 0.02	approx. 60	73 ± 3	65 ± 2	block material, dimensions variable
1.20 ± 0.02	approx. 163	62 ± 3	-	block material, dimensions variable
1.20 ± 0.02	approx. 77	84 ± 3	78 ± 2	block material, plates ebaboard M 04 1000 x 500 x 50 / 1000 x 500 x 75 / 1000 x 500 x 100
1.38 ± 0.03	approx. 65	85 ± 3	85 ± 3	block material, dimensions variable, board material ebaboard 140 1000 x 500 x 50 / 1000 x 500 x 75 / 1000 x 500 x 100
1.60 ± 0.02	approx. 70	76 ± 2	55 ± 2	block material, dimensions variable
1.65 ± 0.02	approx. 70	78 ± 2	90 ± 3	block material, dimensions variable, standard blocks, unwrought 1000 x 500 x 26 / 1000 x 500 x 52 / 1000 x 500 x 104
1.76 ± 0.03	approx. 50	90 ± 3	68 ± 2	block material, dimensions variable, standard plates available as ebaboard 1000 x 500 x 50 / 1000 x 500 x 100
1.76 ± 0.03	approx. 39	90 ± 3	70 ± 3	block material, dimensions variable
0.30 ± 0.02	approx. 60	30 ± 2	45 ± 2	1500 x 500 x 100
0.45 ± 0.02	approx. 40-60	45 ± 2	65 ± 5	1500 x 500 x 50 / 1500 x 500 x 100 / 1500 x 500 x 200
0.65 ± 0.02	approx. 50	62 ± 3	45 ± 2	1500 x 500 x 25 / 1500 x 500 x 50 / 1500 x 500 x 75 1500 x 500 x 100 / 1500 x 500 x 200
0.70 ± 0.02	approx. 55	65 ± 3	50 ± 2	1500 x 500 x 25 / 1500 x 500 x 50 / 1500 x 500 x 75 1500 x 500 x 100 / 1500 x 500 x 150 / 1500 x 500 x 200
1.20 ± 0.05	approx. 62	82 ± 2	84 ± 3	1000 x 500 x 50 / 1000 x 500 x 100
1.21 ± 0.05	approx. 109	79 ± 2	62 ± 2	1000 x 500 x 30 / 1000 x 500 x 50 / 1000 x 500 x 75 1000 x 500 x 100
1.65 ± 0.05	approx. 55-65	90 ± 2	68 ± 3	1000 x 500 x 50 / 1000 x 500 x 75 / 1000 x 500 x 100
1.72 ± 0.05	approx. 44	90 ± 3	75 ± 3	1000 x 500 x 50 / 1000 x 500 x 100
approx. 0.05	approx. 60	-	-	2000 x 1000 x 100 / 2000 x 1000 x 150 / 2000 x 1000 x 200 further dimensions on request
approx. 0.08	approx. 58	30 A	-	2000 x 1250 x 100 / 2000 x 1250 x 200 2000 x 1250 x 300 / 2000 x 1250 x 400 further dimensions on request
approx. 0.16	approx. 57	70 A	-	2000 x 1000 x 100 / 2000 x 1000 x 150 / 2000 x 1000 x 200 2000 x 1000 x 300 / 2000 x 1000 x 400 further dimensions on request
approx. 0.25	approx. 57	70 A	-	2000 x 1000 x 50 / 2000 x 1000 x 100 2000 x 1000 x 150 / 2000 x 1000 x 200 further dimensions on request

	Properties		Properties
Adhesive for boards	beige, redbrown, green, grey, ochre, yellow, blue, Bonding of ebaboard and ebablock ®, high strength, very excellent filling- and flow properties	Adhesive for eboard / eblock ® M 04	yellow, black, bonding of ebablock ® / ebaboard M 04, abrasion resistant, good compressive strength
Adhesive for Alu boards	alu grey, bonding of ebaboard T and W, ebablock ® alu, slow curing, high strength, very excellent filling- and flow properties	Casting resin for eblock ® M 04	yellow, black, changes and repairing of ebablock ® M 04, well castable
Adhesive for eazell boards	grey, bonding of ebazell boards, very excellent filling- and flow properties, very well workable	Adhesive for eboard 140	blue, bonding of ebablock ® / ebaboard 140, abrasion resistant, good compressive strength, well castable
Adhesive for eablock ® K	salmon pink, bonding of ebablock ® K, very high abrasion, very shock resistant	Casting resin for eboard 140	blue, repairing and changes ebaboard / ebablock ® 140, abrasion resistant, good compressive strength, well castable
Putty for eablock ® K	salmon pink, repairing for ebablock ® K, very high abrasion, very shock resistant	Putty for eboard PW 920	green, repairing of ebaboard PW 920, milling after 20-30 min., very well workable (contains no abrasive fillers), dense structure
		Putty for eboard L	ochre, repairing of ebaboard L, fine structure, fast curing, very well workable



Release agents		Polyester fillers		Sheet wax	
T 1-1	liquid, fast drying, polishable, also available as spray	ebalta-plast	white or mahogany, very dense structure, free of pores	Special sheets	light brown, 305 x 610 mm, self adhesive, smooth, 0,25-9 mm, 130 °C
T 2	pasty, soft, polishable	ebalta-lastic	grey, high filling properties, easy to sand	Standard sheets	lemon yellow, 305 x 610 mm, self adhesive, soft, 1-6 mm, 64 °C
T 7	pasty, well polishable, resistant up to 130 °C	Fast curing modelpaste	brown, easy to work and sand	Color pastes	
Honey-Wax	pasty, very well polishable, resistant up to 160 °C	Repair-paste	silver coloured, heat resistant, repair metal or plastic	Colors	red, blue, green, yellow, white, black, brown
1711	Aerosol, contains silicone, resistant up to 125 °C	Fibre-polyester	contains glass fibres, reinforcing	Synthetic gypsum	
PTFE	Aerosol, contains teflon, non-sticking, heat and chemical resistant	Polyester liquid	unfilled, addition of various fillers possible	ebacryl laminating system	
PVA	liquid, builds a shiny heat and chemical resistant film, removable with water	Glass and carbon fibres		Fillers	
Tooling aids		Stapel fibre cloth	easy to drape, 170 g/m ² , 280 g/m ² , 445 g/m ²	Light fillers, filler F-A, F-B, F-alu, F-iron, F-G, MF-paste, alu-granules, alu-powder, slate powder, plastic granules, aerosil, thixo 01, cotton flocks, steel powder	
Mould sealer	liquid, fast drying, sandable and sprayable, seals rough surfaces such as wood or gypsum	Glass filament fabrics	high strength, 163 g/m ² , 280 g/m ² , 445 g/m ²	Others	
Sealer for sheet wax	liquid, fast drying, prevents PVA-film from sagging	Chopped glass strands	length of fibre 6 mm	Solvent cleaners, plastiline, brushes, mixing pots, spray adhesive, hand cream, gloves, taps	
Sealer G1	liquid, fast drying, sealing of <i>ebazell</i> - boards	Carbon fibres	93 g/m ² , 160 g/m ² , 200g/m ² , 245 g/m ²	-	



Our sales agents worldwide

Australia

**Cast Metal Services Pty. Ltd.
(Head Office)**
275 Toombul Road
Northgate, Brisbane
Queensland, 4013
Phone +61 7 32 66 62 66
Fax +61 7 32 66 63 66
E-mail sales@castmetal.com.au

Brazil

**HARD Comércio de Fixadores
e Resinas Ltda**
Rua Humberto Pinheiro Vieira 150
Lote 1B
Joinville SC CEP 89219-570
Phone +55 47 40 09 63 34
Fax +55 47 40 09 63 17
E-mail larri@hard.com.br
Website www.hard.com.br

Indonesia

PT. TRIPURI MITRA NOBELINDO
Jl. Angsana Raya - Kedoya
Jakarta 11520
Phone +62 21 58 05 90 6
Fax +62 21 58 05 95 3
E-mail office@tripuri.co.id
Website www.tripuri.co.id

Japan

Plus Plastics Co. Ltd.
P.C. 271-0051
Mabashi 2541
Matsudo-City
Chibaken
Phone +81 4 73 41 45 61
Fax +81 4 73 41 45 61
E-mail p-p.plastics@tea.ocn.ne.jp

Mexico

José Alfredo Díaz Calderón
Calle Cuecopan 211-B
Fracc. El Pilar Momoxpan
C.P. 72760 Cholula Puebla
Phone +52 22 22 25 57 85
Fax +52 22 22 25 57 85
E-mail ebaltamex@hotmail.com
Website www.ebaltamexico.com

People's Republik of China

Shanghai Rocsky Trading Co. Ltd.
Room E-1 / 2th Floor
Sha Hai Building No. 7319
Zhong Chun Road
Shanghai 201101
Phone +86 21 64 78 95 85
Fax +86 21 64 78 95 86
E-mail wang_songming2000@yahoo.com.cn

Republic of South Africa

Speciality Polymers S.A. (PTY)Ltd
3 Japonica Avenue
Welgedacht Bellville
Cape Town 7530
Phone +27 83 4 57 24 68
Fax +27 21 9 13 76 65
E-mail glkoen@iafrica.com

Thailand

P. Wealth Commercial Co. Ltd.
10/369 Moo 8, Soi Charoensap
Lad-Prow 71 Road
Lad-Prow Bangkok 10230
Phone +66 25 30 50 55
Fax +66 29 56 11 22
E-mail pwealth@ksc.th.com

Our sales agents in Europe

Austria / Croatia / Slovenia

FDW-Handelsges. m.b.H.
Friedau 16
8940 Liezen/Stmk.
Phone +43 3 61 22 55 75
Fax +43 3 61 22 55 75 15
E-mail fdw@aon.at
Website www.fdw.at

Czech Republic

KTK Blansko, spol. s r.o.
67907 Kotvrdovice 277
Phone +42 0 51 64 43 57 2
Fax +42 0 51 64 43 57 3
E-mail trubackova@ebalta.cz
Website www.ebalta.cz

Finland

Campaja Oy
Toivakantie 27
41660 Toivakka
Phone +358-400345516
Fax +358-14212011
E-mail ilkka.heinaho@camaster.fi

France

ebalta France
57 rue de Salonique
ZI du Val D'Argent
95100 Argenteuil
Phone +33 1 34 10 82 95
Fax +33 1 34 10 82 96
E-mail ebalta.france@wanadoo.fr

Italy

Tecno Espanso Resine s.r.l.
Via Romagna, 25
10071 Borgaro T.se (TO)
Phone +39 011 450 08 04
Fax +39 011 450 08 02
E-mail info@tecnoespanso.it
Website www.tecnoespanso.it

Norway

SVAS KJEMI AS
Råsokeveien 19
1900 Fetsund
Phone +47 63 88 55 00
Fax +47 63 88 55 01
E-mail sstanger@frisurf.no

Sweden

MD Komposit
Perstörpsvägen 11
61633 Åby
Phone +46 11 6 07 77
Fax +46 11 6 07 77
E-mail mdkomposit@telia.com
Website www.mdkomposit.3w.se

The Netherlands

James Kunststof b.v.
Thuyalaan 7
7213 VW Gorssel
Phone +31 575 49 07 87
Fax +31 575 49 07 75
E-mail paz35@hetnet.nl

Poland

PROXIMA NTR Sp. z o.o
ul. Pilsudskiego 38
skr.poczt. 33
97-400 Belchatów
Phone +44 63 23 40 8
Fax +44 63 28 92 2
E-mail ntr@ntr.com.pl

Portugal

Remoldes LDA.
Centro Empresarial Vilar de Pinheiro
Estrada Nacional No 13-Armazém 121
4485-947 Vilar de Pinheiro
Phone +351 22 92 79 60 0
Fax +351 22 92 79 60 1
E-mail info@remoldes.com
Website www.remoldes.com

Spain

Safic Alcan España, S.A.
Division ISISA
Rocafort, 241-243
08029 Barcelona
Phone +34 93 3 22 04 53
Fax +34 93 3 22 04 61
E-mail mhaya@safic-alcan.es
Website www.safic-alcan.es

Turkey

ÖZTOPAL TIC.LTD.STI.
1203/8 Sokak No. 7
Ulubey Is Merkezi
35110 Yenisehir Izmir
Phone +90 232 433 55 93
Fax +90 232 433 55 82
Email o.oztopal@oztopal.com

United Kingdom

ebalta UK Limited
B2 Langham Park, Trent Lane,
Castle Donington,
Derbyshire. DE74 2UT
Phone +44 1332 814700
Fax +44 1332 814775
E-mail info@ebalta.co.uk
Website www.ebalta.co.uk

tooling resins blocks ancillaries silicones

Foundry pattern making

Mould and tool making

Design model making

Rapid Prototyping

Composites

Sheet metal forming

Electrical encapsulation

further applications

If you have any questions concerning technical and production issues, please call us anytime to make an appointment with our experts.

ebalta UK Limited
B2 Langham Park, Trent Lane,
Castle Donington,
Derbyshire. DE74 2UT
t: +44 1332 814700
f: +44 1332 814775
e: info@ebalta.co.uk
w: www.ebalta.co.uk

ebalta Kunststoff GmbH
w: www.ebalta.de

ebalta
Solution takes shape